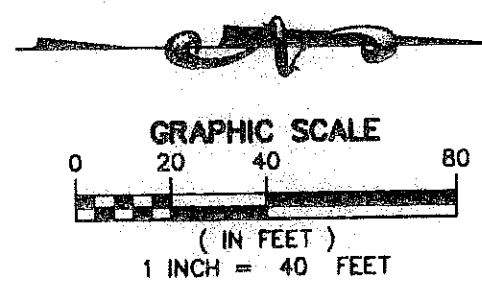
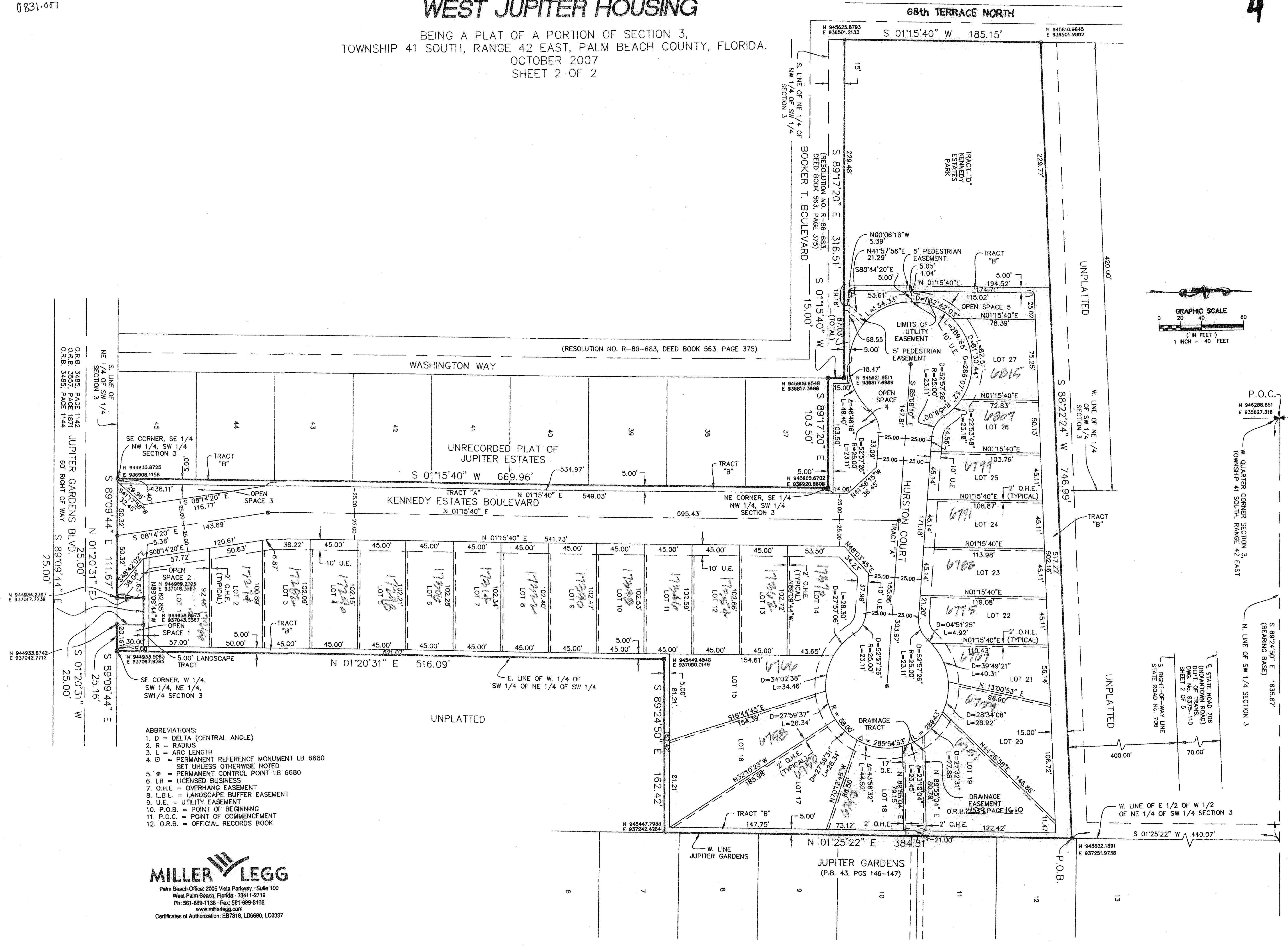


WEST JUPITER HOUSING

BEING A PLAT OF A PORTION OF SECTION 3,
TOWNSHIP 41 SOUTH, RANGE 42 EAST, PALM BEACH COUNTY, FLORIDA.
OCTOBER 2007
SHEET 2 OF 2



- ABBREVIATIONS:
1. D = DELTA (CENTRAL ANGLE)
 2. R = RADIUS
 3. L = ARC LENGTH
 4. □ = PERMANENT REFERENCE MONUMENT LB 6680 SET UNLESS OTHERWISE NOTED
 5. ● = PERMANENT CONTROL POINT LB 6680
 6. LB = LICENSED BUSINESS
 7. O.H.E. = OVERHANG EASEMENT
 8. L.B.E. = LANDSCAPE BUFFER EASEMENT
 9. U.E. = UTILITY EASEMENT
 10. P.O.B. = POINT OF BEGINNING
 11. P.O.C. = POINT OF COMMENCEMENT
 12. O.R.B. = OFFICIAL RECORDS BOOK

MILLER LEGG
 Palm Beach Office: 2005 Via Parkway - Suite 100
 West Palm Beach, Florida - 33411-2719
 Ph: 561-689-1138 · Fax: 561-689-8108
 www.millerlegg.com
 Certificates of Authorization: EB7318, LB6680, LC0337

P.O.C.
 N 946288.851
 E 935827.316
 W. QUARTER CORNER SECTION 3,
 TOWNSHIP 41 SOUTH, RANGE 42 EAST
 N 89°24'50" E 1635.67'
 (BEARING BASE)
 N. LINE OF SW 1/4 SECTION 3

STATE ROAD 706
 (INDIAN TOWN ROAD)
 D.M.C. NO. 9375-110
 SHEET 2 OF 5
 S. RIGHT-OF-WAY LINE
 STATE ROAD NO. 706

W. LINE OF E 1/2 OF W 1/2
 OF NE 1/4 OF SW 1/4 SECTION 3
 S 01°25'22" W 440.07'